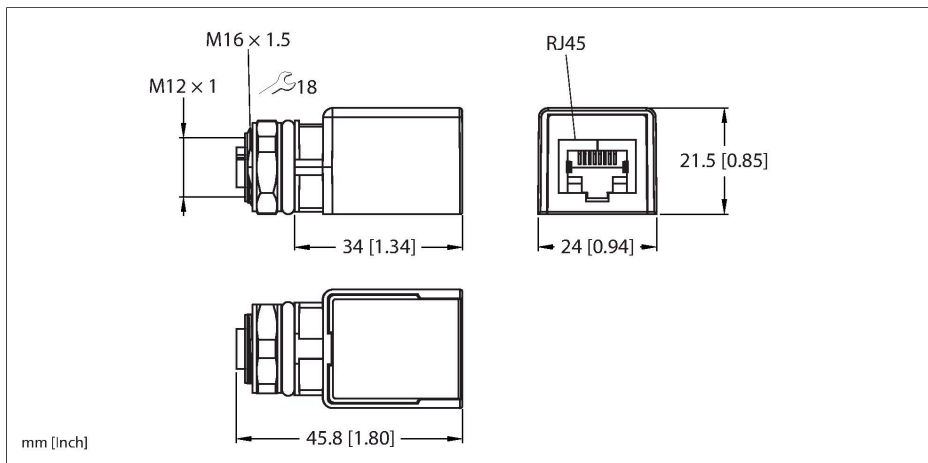


FKSDD RJ45SF 44/ST

Panel Feed-through Receptacle – Female Receptacle to Female Receptacle

Rear Mount



Technical data

Type	FKSDD RJ45SF 44/ST
ID	U2-21428
Connector A	Female, M12 × 1, Straight, D-code
Number of contacts	4
Contacts	Brass, CuZn, Gold-plated
Contact carriers	Plastic, PA6, White
Connector body	Die-cast Zinc, GD-Zn, nickel-plated, Black
Connector seal	O-ring, Plastic, FKM/FPM
Housing material/finish	Die-cast Zink, Die-cast Zink, Nickel-plated
Tightening torque (range)	0.4 ... 1.8 Nm (note max. torque of mating connector!)
Mounting orientation	Rear mount
Panel seal	O-ring, plastic, FPM/FKM
Mounting thread	M16 × 1.5
Locknut	Die-cast Zinc, GD-Zn, Nickel-plated
Mechanical life	> 100 Mating cycles
Pollution degree	3
Protection class (When coupled)	IP67, (plugged)
Connector B	Female, RJ45, Straight
Number of contacts	8

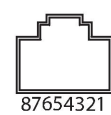
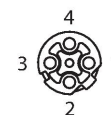
Features

- For Industrial Ethernet
- RJ45 on M12 x 1, 4-pin
- Admissible wall thickness: 1.5...3 mm
- Mounting thread: M16 x 1, 8-pin
- D-coding
- Voltage: 42 V
- RJ45, Female, Straight, 8-pin, Shielded

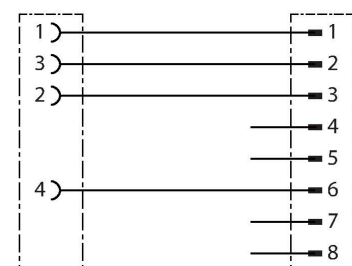
Contact assignment

Connector A

Connector B



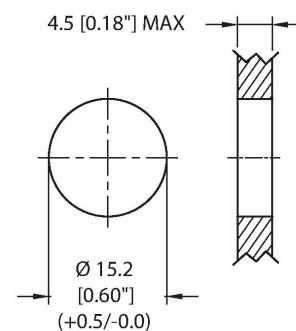
Circuit Diagram



Technical data

Contacts	Brass, CuZn, Gold-plated
Contact carriers	Plastic, LCP, Black
Housing material/finish	Plastic
Mechanical life	> 100 Mating cycles
Protection class (When coupled)	IP20
Cable data	
Fieldbus	Ethernet
Electrical properties at +20 °C	
Rated voltage	48 V
Rated voltage	48 V _{AC} /60 V _{DC}
Current	0.2 A
Mechanical and chemical properties	
Ambient temperature range (static)	-40...+85 °C
Approvals	RoHS
Note	
- We reserve the right to make technical alterations without prior notice.	

Mounting hole - Through



Rear-mounted

